



DRAMATICALLY **INCREASING**

MOBILITY FROM POVERTY

THEARC THEATER

TOWN HALL EDUCATION ARTS RECREATION CAMPUS
WASHINGTON, DC | MAY 3, 2018





ABOUT THE PARTNERSHIP

Funded by the Bill & Melinda Gates Foundation and staffed and supported by the Urban Institute, the Partnership was tasked with answering one big, bold question: What Would It Take to Dramatically Increase Mobility from Poverty? Now, at the end of two years of learning with diverse communities around the country, the Partnership is putting forward powerful, actionable ideas.

THE PARTNERS

DAVID T. ELLWOOD, CHAIR

Harvard Kennedy School

ELISABETH BABCOCK

Economic Mobility Pathways

JOSHUA BOLTEN

Business Roundtable

ARTHUR C. BROOKS

American Enterprise Institute

WILLIAM J. BYNUM

Hope Enterprise Corporation

RAJ CHETTY

Stanford University

REV. LUIS CORTÉS JR.

Esperanza

JENNIFER L. EBERHARDT

Stanford University

KATHRYN EDIN

Princeton University

ROBERT GREENSTEIN

Center on Budget and Policy Priorities

CHERYL L. HYMAN

Author, *Reinvention: The Promise and Challenge of Transforming a Community College System*

ANTHONY B. ITON

The California Endowment

LAWRENCE KATZ

Harvard University

N. GREGORY MANKIW

Harvard University

AI-JEN POO

National Domestic Workers Alliance; Caring Across Generations

JOHN A. POWELL

Haas Institute for a Fair and Inclusive Society

CECILIA ROUSE

Princeton University

JUAN SALGADO

City Colleges of Chicago

ELDAR SHAFIR

Princeton University

SRINIJA SRINIVASAN

Loove

MARTA TIENDA

Princeton University

JEREMY TRAVIS

Laura and John Arnold Foundation

ROXANE WHITE

Aspen Institute

HIROKAZU YOSHIKAWA

New York University



SESSION ONE | 8:45–10:50 AM

What Will It Take?

8:45 AM GREETINGS

DAVID T. ELLWOOD

US Partnership on Mobility from Poverty;
Harvard Kennedy School

NISHA G. PATEL

US Partnership on Mobility from Poverty

RYAN RIPPEL

Bill & Melinda Gates Foundation

SARAH ROSEN WARTELL

Urban Institute

RAHSAAN BERNARD

Building Bridges Across the River

COMMUNITY VOICES [DILZA GONZALEZ, SAN JOSE, CA](#)

A CALL FOR UNITY: THE PARTNERSHIP'S DEFINITION OF MOBILITY

ARTHUR C. BROOKS

American Enterprise Institute

JOHN A. POWELL

Haas Institute for a Fair and Inclusive Society

MEASURING MOBILITY

HILARY PENNINGTON

Ford Foundation; Fund for Shared Insight

MELINDA TUAN

Fund for Shared Insight

COMMUNITY VOICES [LEONARD RILETT, RIVERVIEW, MI](#)

INTERLOCKING STRATEGIES: NARRATIVE, JOBS, PLACE, PEOPLE, AND DATA

DAVID T. ELLWOOD

US Partnership on Mobility from Poverty;
Harvard Kennedy School

ELISABETH BABCOCK

Economic Mobility Pathways

REVEREND LUIS CORTÉS, JR.

Esperanza

LAWRENCE KATZ

Harvard University

AI-JEN POO

National Domestic Workers Alliance;
Caring Across Generations

10:50 AM BREAK

SESSION TWO | 11:00 AM–1:00 PM

How Do We Get There?

11:00 AM

COMMUNITY VOICES [DEVIN JOHNSON, WASHINGTON, DC](#)

LEVERAGING BIG DATA TO SUPPORT COMMUNITY EFFORTS

RAJ CHETTY

Stanford University

WILLIAM J. BYNUM

Hope Enterprise Corporation

KATHRYN EDIN

Princeton University

SARAH OPPENHEIMER

King County Housing Authority

COMMUNITY VOICES [THELMA COLLINS, ITTA BENA, MS](#)

MOVING IDEAS INTO ACTION

JOSHUA BOLTEN

Business Roundtable

SUE DESMOND-HELLMANN

Bill & Melinda Gates Foundation

WES MOORE

Robin Hood

NISHA G. PATEL

US Partnership on Mobility from Poverty

CLOTILDE PEREZ-BODE DEDECKER

Community Foundation for Greater Buffalo

PETER SCHER

JPMorgan Chase & Co.

1:00 PM LUNCH AND NETWORKING

MOBILITY DEFINITION

Economic
Success



Mobility

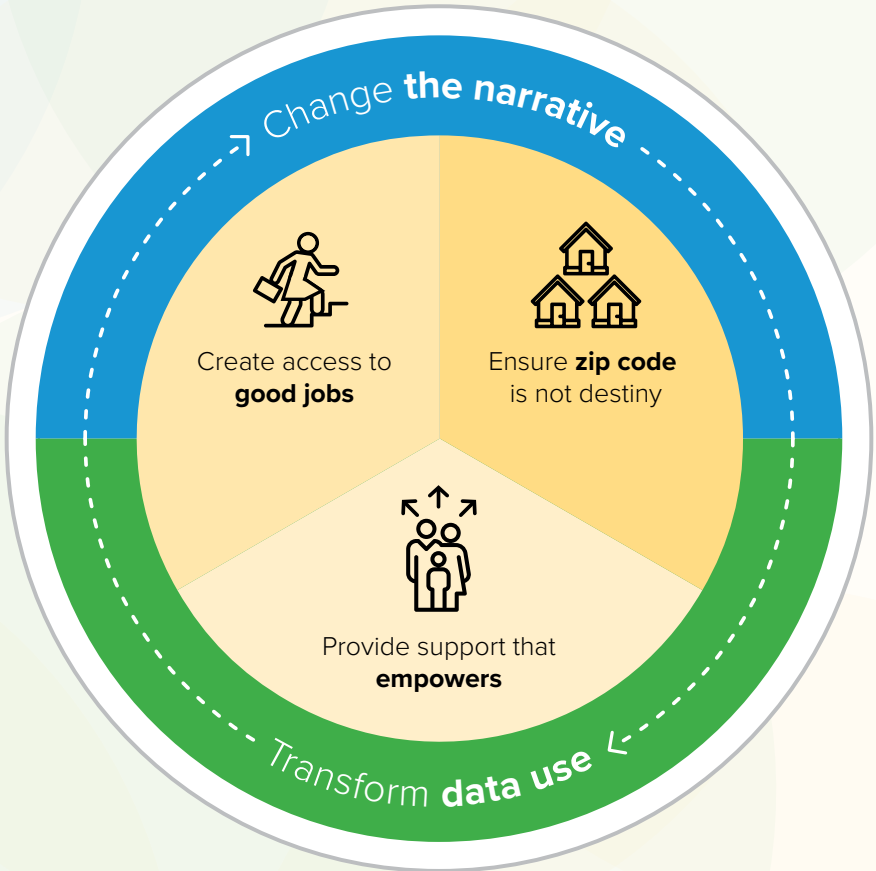


Being Valued
in Community



Power and
Autonomy

INTERLOCKING STRATEGIES



Connect With Us!

#mobilityfrompoverty

SPEAKERS

DAVID ELLWOOD

[@KENNEDY_SCHOOL](#)

NISHA G. PATEL

[@HEYNISHA](#)

RYAN RIPPEL

[@RIPPELSTL](#)

SARAH ROSEN WARTELL

[@SWARTELL](#)

RAHSAAN BERNARD

[@THEARC_DC](#)

ARTHUR C. BROOKS

[@ARTHURBROOKS](#)

JOHN A. POWELL

[@PROFJOHNAPOWELL](#)

HILARY PENNINGTON

[@HPENNINGTON_](#)

MELINDA TUAN

[@MELINDATUAN](#)

ELISABETH BABCOCK

[@BETHBABCOCK1](#)

REVEREND LUIS CORTÉS, JR.

[@ESPERANZA_US](#)

LAWRENCE KATZ

[@LKATZ42](#)

AI-JEN POO

[@AIJENPOO](#)

RAJ CHETTY

WILLIAM BYNUM

[@HOPECUBILL](#)

KATHRYN EDIN

[@KATHRYNEDIN](#)

SARAH OPPENHEIMER

JOSHUA BOLTEN

[@BIZROUNDTABLE](#)

SUE DESMOND-HELLMANN

[@SUEDHELLMANN](#)

WES MOORE

[@IAMWESMOORE](#)

CLOTILDE PEREZ-BODE DEDECKER

PETER SCHER

[@JPMORGAN](#)



MOBILITYPARTNERSHIP.ORG